

DWR PARADEEP

Cyclone bulletin No.06

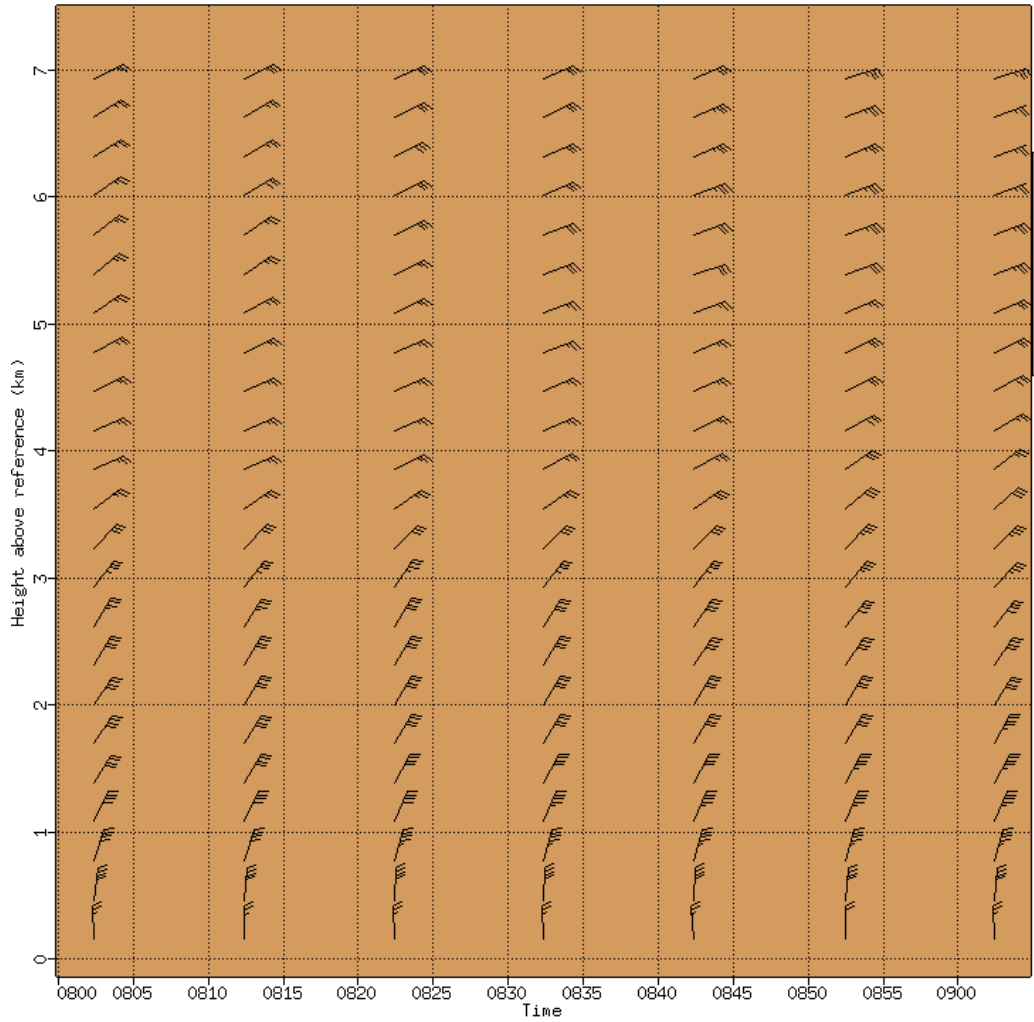
Cyclone : DANA

Time: 24/10/2024 14:30 IST

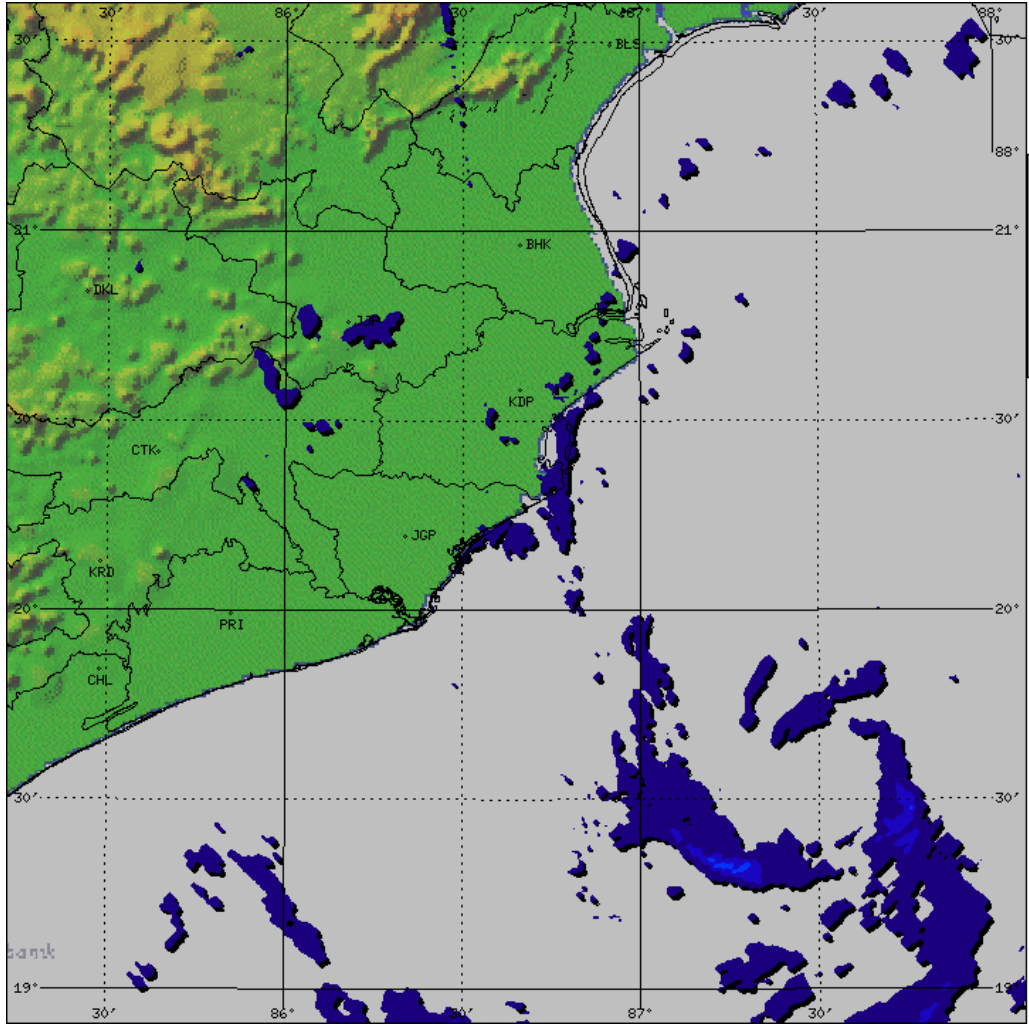
| | | |
|----|--|----------------------------------|
| 1. | Name of the Station | DWR PARADEEP |
| 2. | Date & Time of observation (UTC) | 24/10/2024 0900 UTC |
| 3. | Name of Cyclone | DANA |
| 4. | Information about the Eye of the cyclone | |
| | a)Is the Eye Visible | Yes |
| | b)Shape of the Eye | Not Prominent |
| | c)Diameter of the Eye (km) | N/A |
| | d)Estimation of centre of the cyclone based on Eye/Spiral band observation | 19.38N/87.93E/125.9deg/165.3km |
| | e)Echo top (20 dBZ level) of rain bearing clouds around the System within 100 km radius | N/A |
| | f) Maximum radar reflectivity (dBZ) in eye wall and Spiral band region, its height (km) and position (azimuth and distance from the radar) | 42.5dBZ/7.9km/126.6/146.0km |
| | g) Maximum reflectivity at any other area (spiral/ streamers etc) | 43.5dBZ/9.1km/140.1deg/118.8km |
| | h) Maximum radial velocity in observed (mps), its height (km) and its position (azimuth and distance from the Radar) | -31.5mps/3.1km/133.3deg /165.2km |
| | i) Maximum velocity in any other area (spiral / streamers / rain shields etc) | 47.8mps/1.3km/152.2deg/92.2km |
| 5. | Tendency of the Cyclone | |
| | a. Intensity(Increasing/Decreasing) | Sustaining |
| | b. Duration for which the information on movement pertains to | One hour |
| | c. Direction of Movement | NNW |
| | d. Estimated speed of Movement | 12 kmph(approx) |
| 6. | Any other Significant Feature | N/A |
| 7. | Confidence | LOW |

Dhaneesh K (Sc.D)

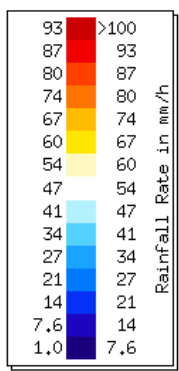
OFFICER-IN-CHARGE
DWR Paradeep

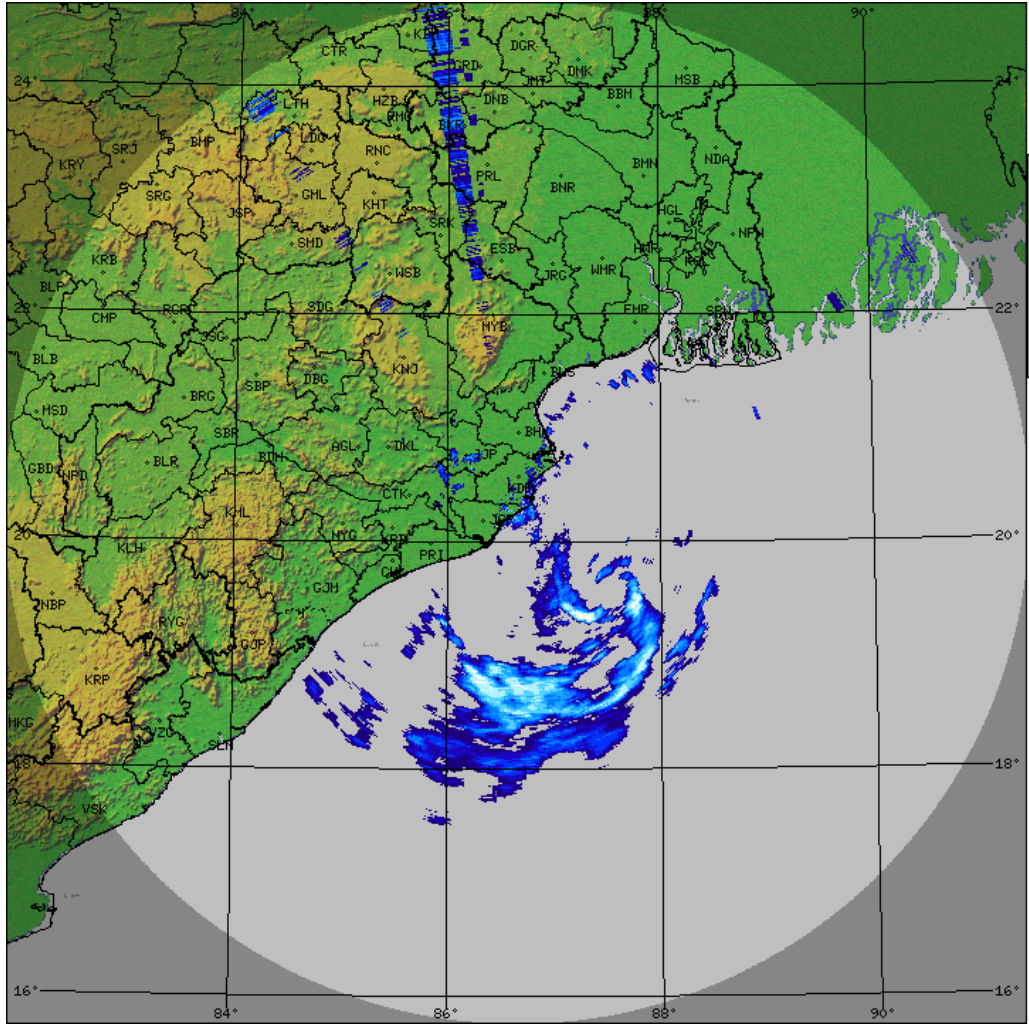


PARADEEP-RADAR
Vol. Vel. Proc.
VVP_30KM
Task: IMD-B
#Intervals:26
Heights:0-8 km
Max Range:30 km
09:02:18Z
24 OCT 2024 UTC

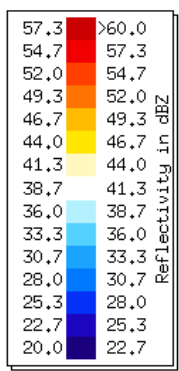


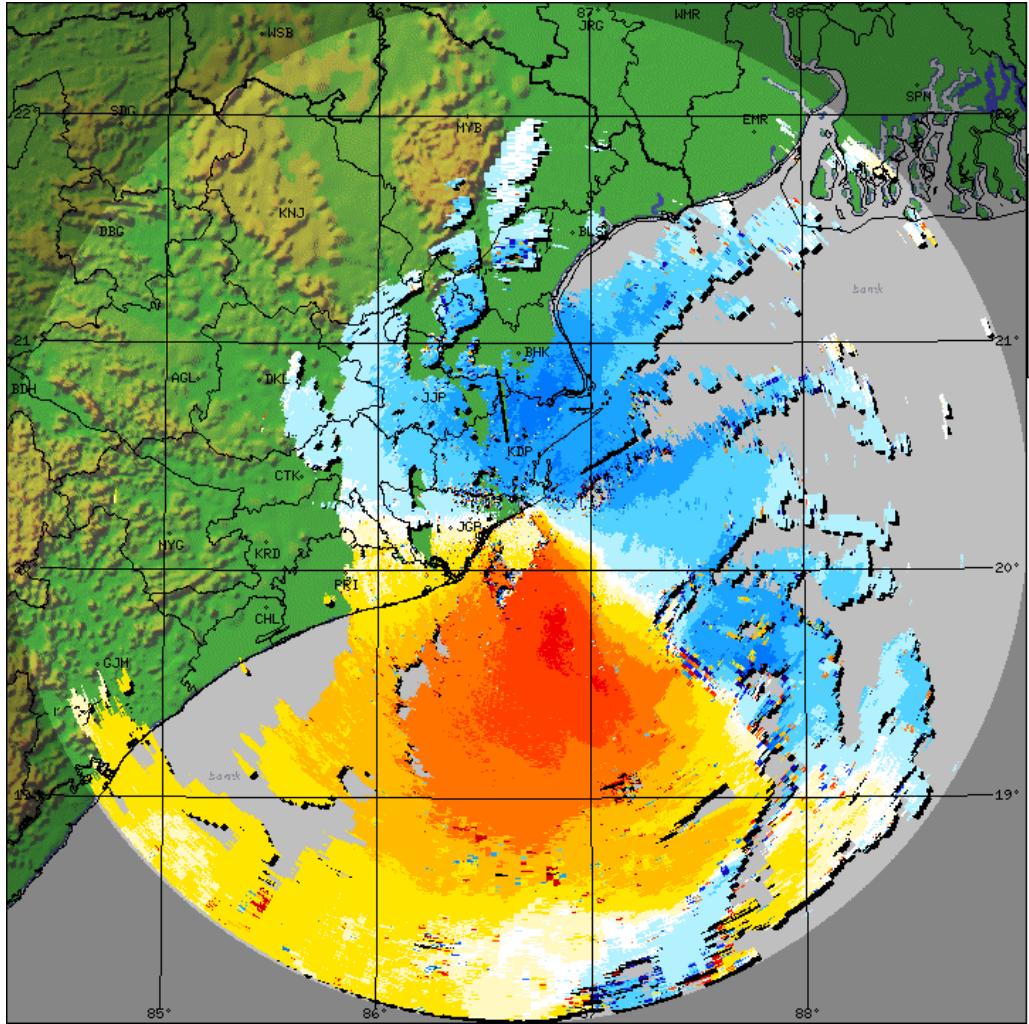
PARADEEP-RADAR
 Surface Rainfall
 SRI_150
 Task: IMD-B
 PRF:600/450
 Melt:Unknown
 Max Range:150 km
09:02:18Z
24 OCT 2024 UTC



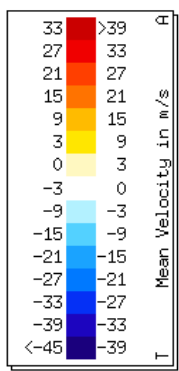


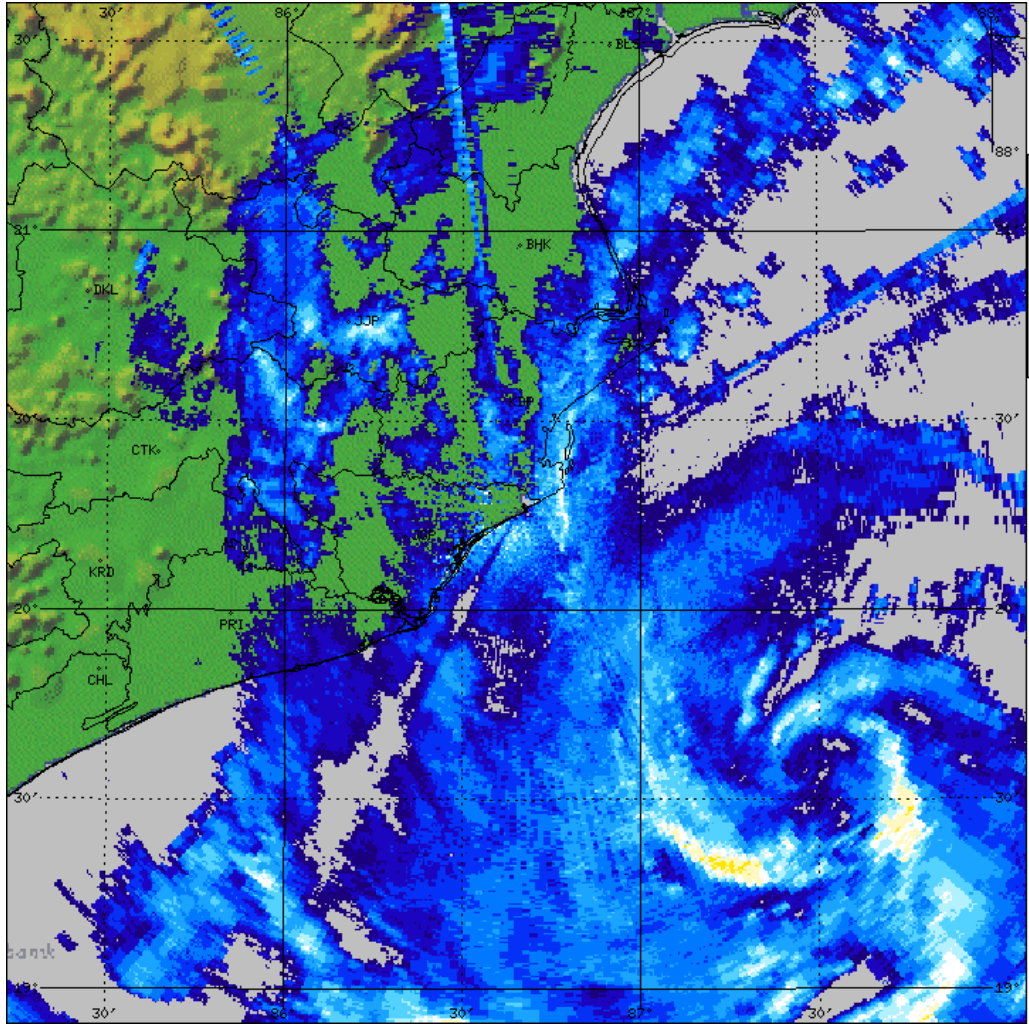
PARADEEP-RADAR
 PPI
 PPI_Z
 Task: IMD-C
 PRF: 250Hz
 Elevation:0,5
 Max Range:500 km
09:00:25Z
24 OCT 2024 UTC



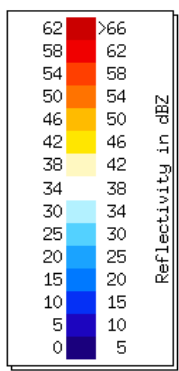


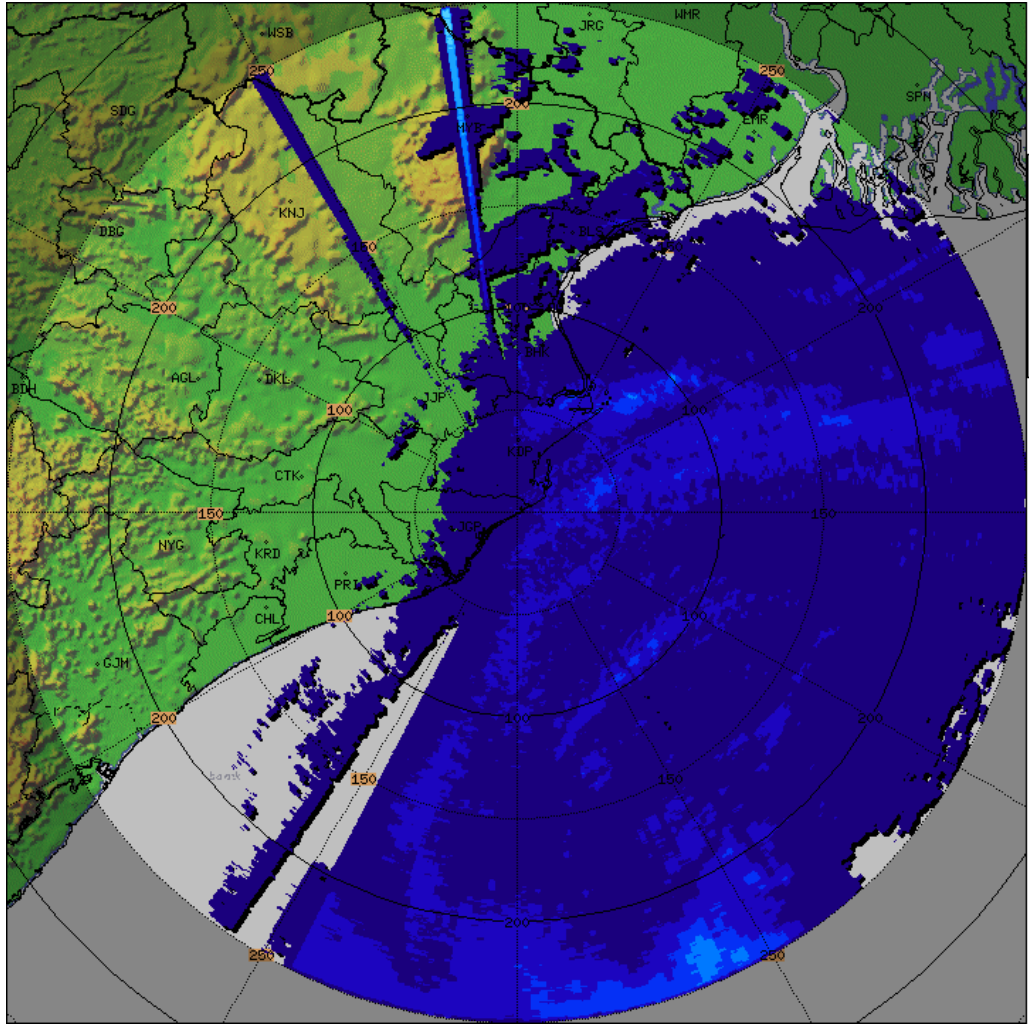
PARADEEP-RADAR
 PPI
 PPI_V
 Task: IMD-B
 PRF:600/450
 Elevation:0.5
 Max Range:250 km
09:02:18Z
 24 OCT 2024 UTC





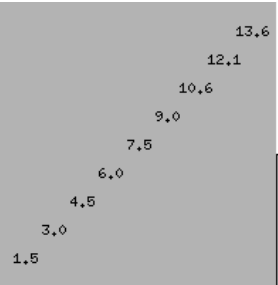
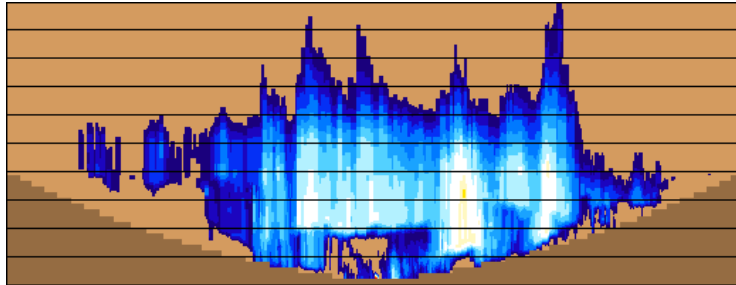
PARADEEP-RADAR
PPI
PPI_150KM
Task: IMD-B
PRF:600/450
Elevation:0.5
Max Range:150 km
09:02:18Z
24 OCT 2024 UTC





PARADEEP-RADAR
 N Hours Rainfall
 HOUR_24
 Task: IMD-B
 PRF:600/450
 Hours:21/24
 Max Range:250 km
03:00:00Z
24 OCT 2024 UTC

| Rain Accum. in mm | Color |
|-------------------|---------------|
| >100 | Dark Red |
| 93 | Red |
| 87 | Dark Orange |
| 80 | Orange |
| 74 | Light Orange |
| 67 | Yellow-Orange |
| 60 | Yellow |
| 54 | Light Yellow |
| 47 | Light Green |
| 41 | Green |
| 34 | Light Green |
| 27 | Green |
| 21 | Light Green |
| 14 | Green |
| 7,6 | Light Green |
| 1,0 | Dark Green |



PARADEEP-RADAR
 Max with panels
 MAX_Z
 Task: IMD-B
 Min Hgt:0.0 km
 Max Hgt:15.0 km
 Max Range:250 km
09:02:18Z
24 OCT 2024 UTC

